

# On The Disk...

*A run-down of what's included on the free disk with this issue*

*Collated and tested by Mike Orriss*

Each month, subscribers to The Delphi Magazine receive a *free* companion disk packed with goodies. This includes the source code and example files for all the articles in the current issue.

But, there's much more too! The headings are the directory names where you will find the files on the floppy disk.

## ► HTMLVIEW

The THtmlViewer component provides an easy way to display HTML documents in a Delphi program. Version 4.03 of the viewer supports most of the HTML 2.0 specifications and several of the more popular HTML 3 enhancements. See the screen shot on the right for a taster.

## ► RASDIAL

TRasDialer is a Delphi 2.0 component that facilitates connecting to Microsoft Dial-Up Adapter Services like TCP/IP communication via the internet or connecting to a RAS Service. RASDIAL.EXE contains a trial version and registration buys you a help file: a method of software protection I've seen a few times recently and I suspect I will see it many times in the future!

## ► AUTOPLAY

The TAutoPlay component generates animated icons and it's results are very smooth on my NT4 machine. Set the UseThread property to true and your icons can whizz along at a fair rate of knots. Try the included demo and see just how fast the icons (see the illustration) move on your system.

## ► CODEQUIK

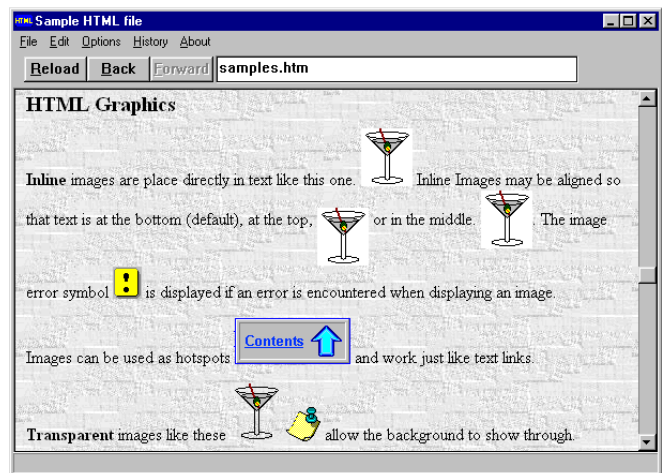
CodeQuick is an add-in expert for Delphi 2.0 that provides a repository for frequently used code fragments. It can contain comments, constructs, procedures or even whole units. It installs as an item in the View menu. Double-clicking on one of these fragments in the explorer-like interface enters the fragment into the editor window at the current cursor position.

## ► COLORBUT

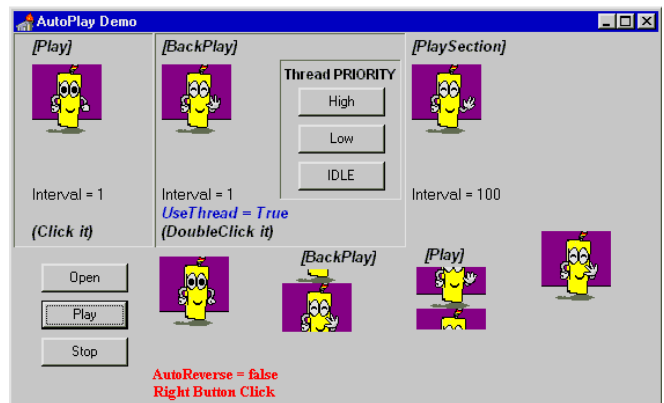
TColorButton is a freeware component (with source) that is descended from TCustomControl that provides very nice coloured buttons with a range of effects, as you can see from the screenshot on the cover

## ► BRWSFLDR

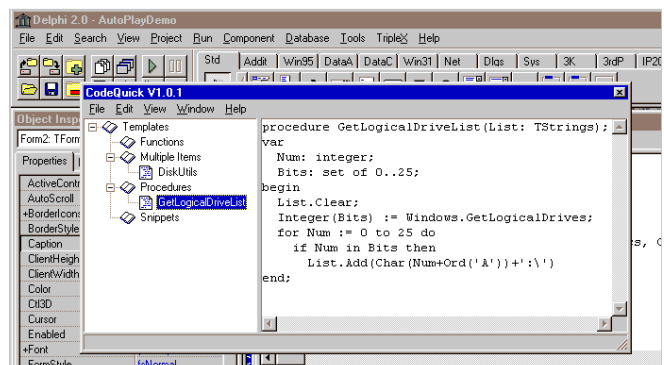
TBrowseFolder is a freeware component (with source) that encapsulates the SHBrowseForFolder interface, which allows Win32 users to select a directory using the standard Explorer-like treeview dialog.



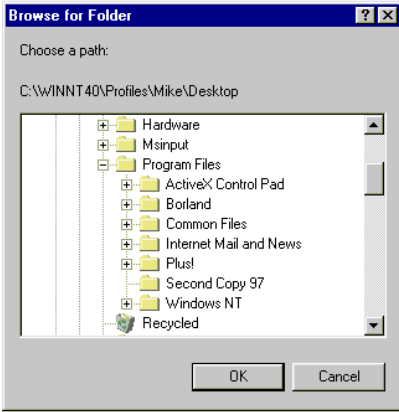
► THtmlViewer does a good job of displaying your html documents and has some useful sample files that will even help you learn more HTML!



► Animated icons anyone? With TAutoPlay it's simple and really smooth



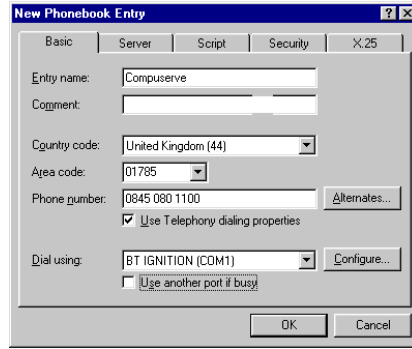
► CodeQuick can really speed up your Delphi development by keeping all those handy code fragments close at hand for immediate pasting into your current project



- With *TBrowseFolder* in your project your users can select files using this Explorer-like interface; and best of all it's freeware!



- Link right from your apps to your Web site with *UrlLabel*



#### ➤ URLLABEL

This is a freeware TLabel descendant that allows the user to run URLs and files by clicking on it.

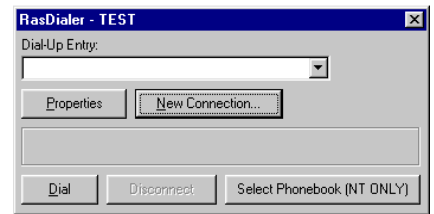
For example you can include your product's Web site URL in the About box, allowing the user to access to the page by clicking on the label, when the system default browser is opened.

#### ➤ INTERNET

Listing of Delphi-related World Wide Web and ftp sites.

#### ➤ USERGPS

List and contact information for Delphi User Groups (email us with details of *your* group for inclusion in the next list).



- Left and above: remote access with *TRasDialer*

### Important Note!

Always, but ***always*** make a backup copy of your Delphi 1 or 2 component library file *before* you take the plunge and install *any* new component into Delphi! Sometimes component installation can trash your component library and you will then be left with an inoperative Delphi will have to re-add *all* your extra components.

### Send In Your Code...

If you have some carefully crafted routines, why not send them in for evaluation by mail or (zipped up) by CompuServe email to our Disk Editor, Mike Orriss, on 100570,121. We do consider *all* submissions for use on future disks.